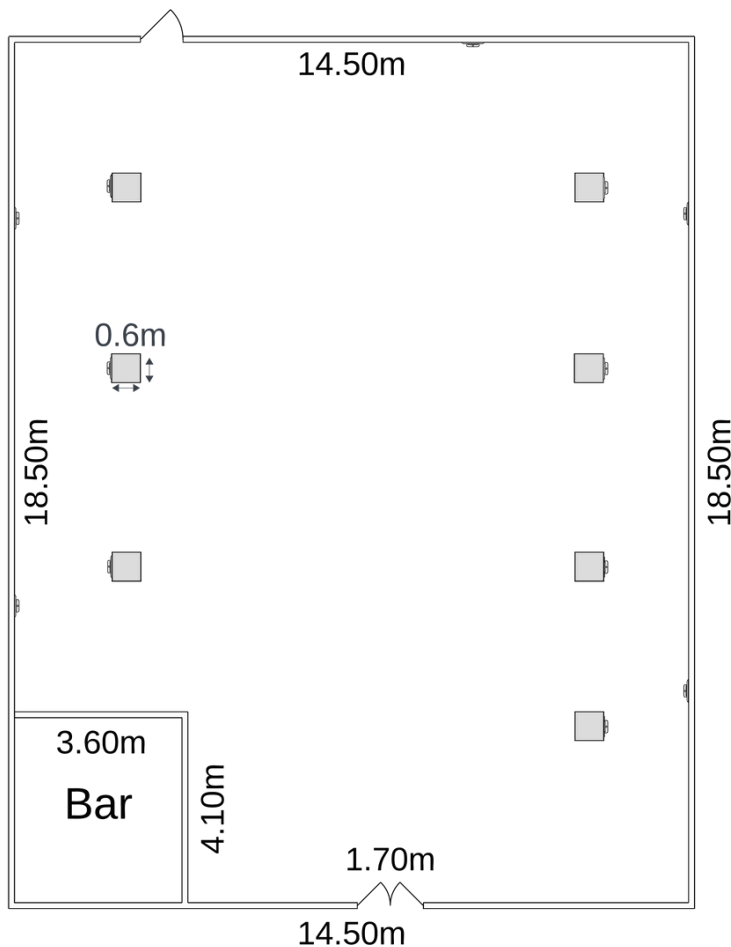


Dining Room

The Dining Hall is one of our most popular event spaces and largest rooms. Beautifully decorated with fairy lights this room can be used for a conference space, a fabulous evening entertainment room, or any event between.

Room Layout



Capacities

Standing
200

Theatre
200 (aisle)
250 (no aisle)

Reception/Party
160

Dinner
160

Technical Specs

Lectern including gooseneck mic, and up to 2 wireless microphones, 2 lapel microphones as required.

1 dropdown projector screen (3.5m).

Portable equipment also available.

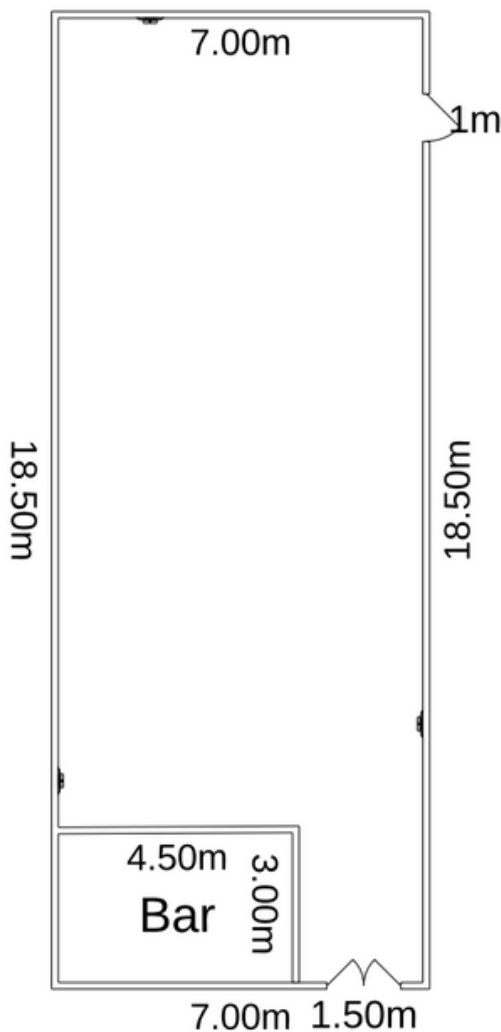




Drawing Room

Originally the old smoke room, this room is now home to a coffee shop during the day and in the evening a bar or dining space. Seating up to 60 guests for dinner it is an ideal space for smaller weddings, private parties or intimate dinners.

Room Layout



Capacities

Standing
80

Theatre
80

Reception/Party
80

Dinner
60

Technical Specs

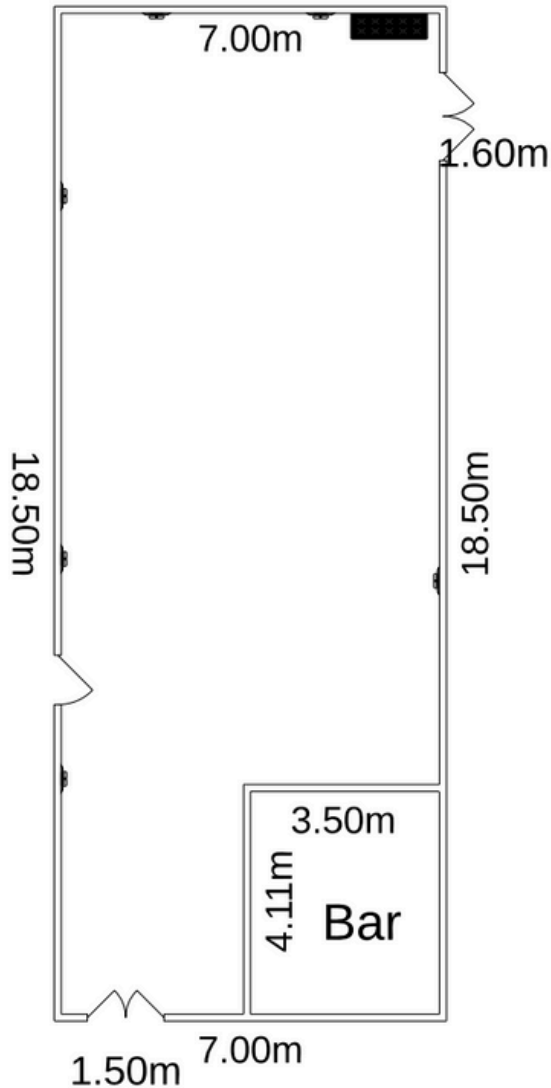
Presentation speakers included on request - suitable for speeches and background music. Portable equipment also available.



Reading Room

The Reading Room offers a cosy, tranquil atmosphere which is perfect for relaxing with friends. It is often partnered with the Debates Chamber as a bar area, and is used for lunches, as a break out space for conference, or just for a get together with family or friends.

Room Layout



Capacities

Standing
80

Theatre
70

Reception/Party
80

Dinner
60

Technical Specs

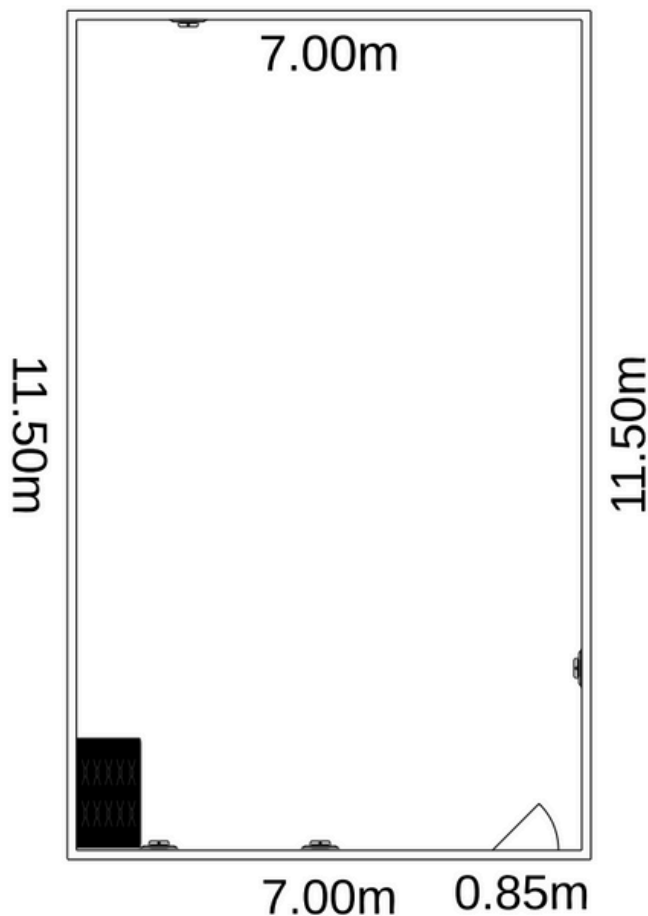
Portable equipment available.





The Bridie Library provides a perfect setting for meetings, a breakout space for conferences, and is ideal for small dinners and receptions. Retaining its original features this room has a great deal of history and is the most peaceful space in the building.

Room Layout



Capacities

Standing
50

Theatre
50

Dinner
40

Technical Specs

Portable equipment available.



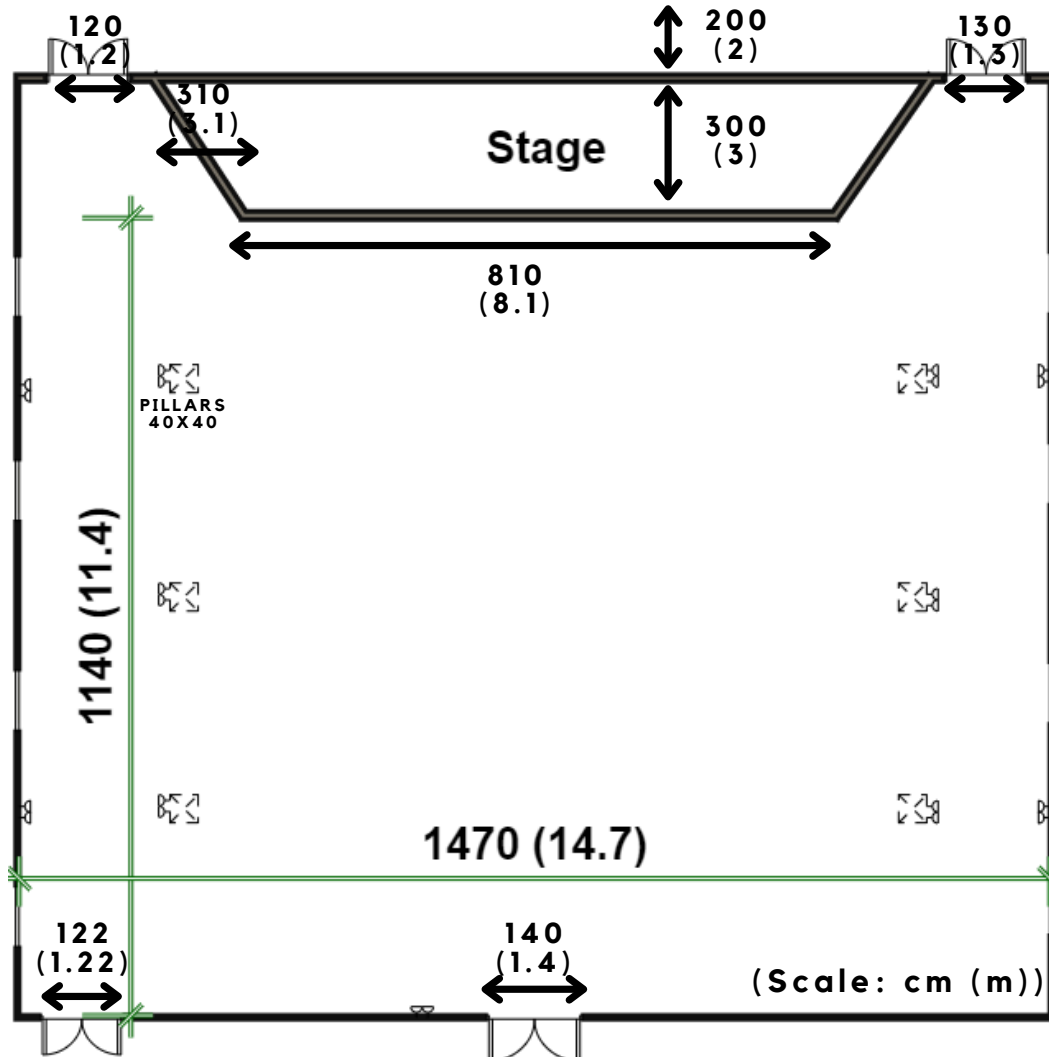
Glasgow University Union

Debates Chamber



Our Debates Chamber is one of the largest rooms within the Union. Renovated to its original stature, the space conveys a sense of tradition, elegance and grandeur.

Room Layout



Capacities

Standing
500

Theatre
200 (aisle)
250 (no aisle)

Reception/Party
160

Gallery
200

Technical Specs

Lectern including gooseneck mic, and up to 2 wireless microphones, 2 lapel mics as required.

1 dropdown projector screens, rear projecting (3.5m)

Portable equipment also available.



Glasgow University Union

Portable Equipment Hire



Speakers

2x Single Speaker PA

Available with 2 wired microphones and line-in inputs

1x Double Speaker PA (Behringer PPA500BT)

Projectors

2x Epson EB W06

1.7m screens.

In-depth information and additional options may be available, please get in touch to enquire.